

**JACQUELINE**

**JARROT**

FINE ITALIAN LEATHER HANDBAGS & BELTS  
MADE IN THE USA

*2008 Spring Collection*  
**2008 SPRING COLLECTION**



# JACQUELINE

# JARROT

FINE ITALIAN LEATHER HANDBAGS & BELTS  
MADE IN THE USA

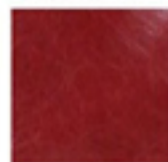
ALL JACQUELINE JARROT HANDBAGS ARE MADE OF EXCLUSIVE PREMIUM LEATHERS AND ITALIAN HARDWARE DIPPED IN 14 KARAT GOLD. SOME HAVE A CHOICE OF ZIPPER OR MAGNETIC SNAP CLOSURE, AND ALL BAGS COME WITH AN EXCLUSIVE POLYCOTTON BLEND JACQUELINE JARROT DUST COVER.

PALETTE FOR FALL is inspired by a picture of a Japanese Baroque tea screen we saw in an architecture magazine with a beautiful scene rendered in black, olive, and dark brown on a lacquered beige background with a rich burgundy border.

PALETTE FOR SPRING- We had three inspirations for spring.

1. Travel posters from the 1960s. Deep orange and cream with brown, or beige and brown on a khaki background.
2. We also fell in love with all the colors of a peacock feather- beige, champagne, olive, blue, and purple!
3. Of course, nautical always rocks in the Spring, with cream patent, white and navy...so hot with shiny gold.

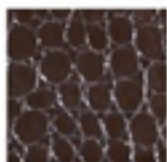
## SWATCHES



Burgundy



Black Patent



Chocolate Croco



Cream Patent



Beige Patent



Cognac



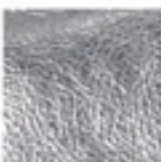
Eggplant



Persimmon



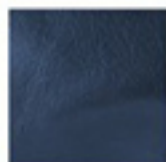
Gunmetal



Nickel



Olive



Navy

# QUILTED

*Collection*

## PATENT LEATHER



## METALLIC



## LEATHER



### CHERYL ANN

**BUCKET SHOULDER BAG**  
IN CHOCOLATE BROWN LEATHER  
13"x15"x3" 17" STRAP  
24K GOLD HARDWARE  
FLAP CLOSURE W/ MAGNETIC CLOSURE



### AMBER

**QUILTED TOTE**  
IN BLACK NEW LOOK  
15"x14"x5" 20" STRAP  
SILVER HARWARE EXPOSED  
ADJUSTABLE GUSSET DETAIL  
MAGNETIC SNAP CLOSURE



### STELLA

**QUILTED DOCTORS BAG**  
IN COGNAC PATENT LEATHER  
15"x12"x5" 17" STRAP  
24K GOLD EXPOSED  
EXPOSED EXTERIOR ZIPPER POCKET  
ZIPPER CLOSURE



### DIVA

**QUILTED CLUTCH**  
IN BEIGE PATENT LEATHER  
10"x7"x5"  
CUT OUT HAND GRIP  
ZIPPER CLOSURE

# BRAIDED

## Collection



### SARRA

LARGE SATCHEL  
PICTURED IN COGNAC PATENT LEATHER  
19"X10"X9" 20" STRAP  
MAGNETIC SNAP CLOSURE

#### PATENT LEATHER



### SARALISA

MEDIUM SATCHEL  
PICTURED IN CREME PATENT LEATHER  
17"X8"X7" 17" STRAP  
ZIPPER CLOSURE

#### METALLIC



### SERAPHINA

SMALL SATCHEL  
PICTURED IN NICKEL METALLIC LEATHER  
15"X6"X5" 15" STRAP  
ZIPPER CLOSURE

#### LEATHER



### ELLE

FLAT FOLDOVER CLUTCH  
PICTURED IN GUNMETAL LEATHER  
11"X7"X2" BRAIDED FAUX TIE FRONT  
ZIPPER CLOSURE



### ALLISON

BUCKET SHOULDER BAG  
PICTURED IN OLIVE LEATHER  
19"X10"X9" BRAIDED 20" STRAP  
24K GOLD HARDWARE CUT OUT SIDE DETAILS  
DOUBLE MAGNETIC SNAP CLOSURE

# TASSEL Collection

## PATENT LEATHER



## METALLIC



## LEATHER



## TALLULAH

**MESSENGER BAG**  
IN BURGUNDY LEATHER  
14"X12"X4" 28" STRAP  
DETACHABLE TASSEL ZIPPER CLOSURE



## ZOE

**BUCKET SHOULDER BAG**  
IN CHOCOLATE BROWN LEATHER  
13"X15"X3" 17" STRAP  
24K GOLD HARDWARE  
DETACHABLE TASSEL ZIPPER CLOSURE



## PAIGE

**EVENING CLUTCH**  
IN PERSIMMON PATENT LEATHER  
11"X6"X2" ERGONOMIC STRAP  
DETACHABLE TASSEL ZIPPER CLOSURE



## ALANA

**CONVERTIBLE FOLD OVER CLUTCH**  
IN GUNMETAL LEATHER  
10"X10" CUT OUT HANDLE  
DETACHABLE TASSEL DETAIL  
MAGNETIC SNAP CLOSURE

# CHAIN Collection

## PATENT LEATHER



## METALLIC



## LEATHER



## SARALISA

**SLOUCHY SHOULDER BAG**  
IN BLACK LEATHER  
17"X5"X7" 17" STRAP  
24K GOLD CHAIN & HARDWARE  
MAGNETIC SNAP CLOSURE



## AUBREY

**SHOULDER BAG WITH CHAIN DETAIL**  
IN CHOCOLATE BROWN LEATHER  
14"X12"X4" 22" STRAP  
24K GOLD CHAIN AND HARDWARE  
MAGNETIC SNAP CLOSURE



## PAIGE

**EVENING CLUTCH**  
IN CHOCOLATE CROCO PATENT LEATHER  
11"X6"X2" ERGONOMIC HAND STRAP  
24K GOLD CHAIN  
MAGNETIC SNAP CLOSURE

# ESSENTIALS

## Collection

### PATENT LEATHER

	BLACK
	BEIGE
	CHOCOLATE
	CHOCOLATE CROCO
	CREME
	COGNAC
	PERSIMMON

### METALLIC

	BRONZE
	CHAMPAGNE
	GUNMETAL
	NICKEL

### LEATHER

	BLACK
	BROWN
	BURGUNDY
	EGGPLANT
	NAVY
	OLIVE
	WHITE



### TONI BELT

2" X 30"

24K GOLD HARDWARE

ONE SIZE FITS ALL (XS-L)



### MARGO CUFF

8" X 2" X 1/16"

MULTI STITCH

24K GOLD HARDWARE



### COSMETIC CLUTCH

7 1/2" X 5 1/2"

MULTI STITCH

ZIPPER CLOSURE

COMES IN A SET OF SIX COLORS

*Terms and Conditions*  
**TERMS AND CONDITIONS**

- No claims allowed unless made within 5 days after receipt of goods.
- Checks returned NSF are subject to a \$25 processing fee for each NSF incurred.
- No returns for repair will be accepted without a Return Authorization # issued by JJE, Inc.
- Order cancellations must be made in writing within 5 days of order date, and must be approved in writing by JJE, Inc.

This order is accepted through JJE, Inc. subject to credit approval. All goods are made to order, and goods already in production are the customer's financial responsibility. C.O.D's are not accepted on New Accounts unless authorized. Complete ship date is X-Factory.

The undersigned person personally guarantees the terms of this order: I have read and agree to the terms and conditions:

\_\_\_\_\_  
(Print buyer name)

\_\_\_\_\_  
(Authorized buyer signature)

\_\_\_\_\_  
(Print company name)

**Method of Payment:**

Net 30  COD  Credit Card#: \_\_\_\_\_ Exp: \_\_\_\_\_

Please attach to the purchase order and fax to 310-277-1188.

**DELIVERY: AS READY 1/30 START  
MINIMUM 30 DAY SHIPPING WINDOW**